

DM(R)系列渣浆泵 DM(R) Type Slurry Pump



口径/Diameter : 25 ~ 650mm
流量/Capacity : 2 ~ 9500m³/h
扬程/Head : 10 ~ 55m (单级/ Single Stage)

250 X 200 DM (R) - ST

- 托架形式/Base Type
- 橡胶内衬/Rubber Liner
- 渣浆泵类型/Slurry Pump Type
- 出口直径/Discharge Dia.(mm)
- 进口直径/Suction Dia.(mm)

注：金属内衬无标识
Note: Metal Liner is not shown

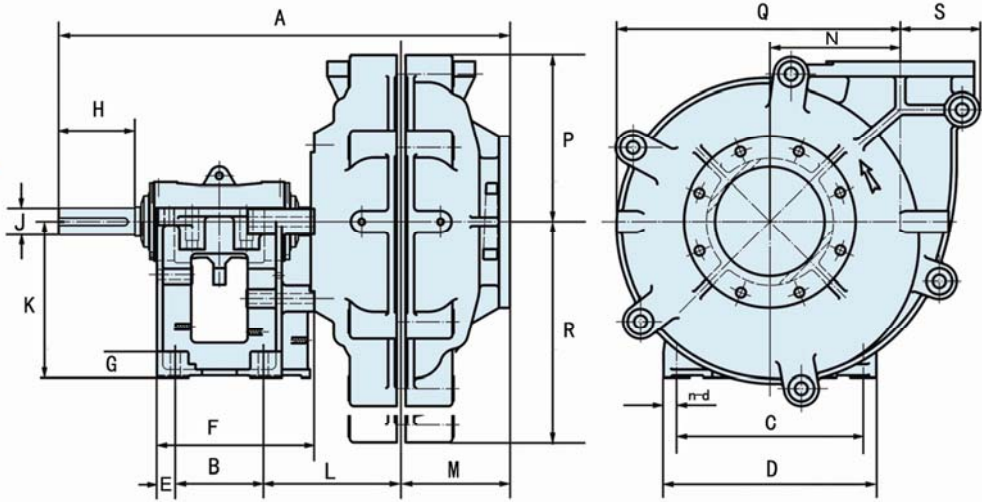
产品特点：双泵壳结构。高效、耐磨、性能稳定、零件互换性强，内衬和叶轮材料可采用耐磨金属或橡胶，泵出口方向可按 45°间隔旋转八个不同角度安装使用，可多级串联，可皮带传动、直联传动。轴封可采用填料密封、副叶轮密封或机械密封。泵的旋转方向从驱动端看为顺时针旋转。

应用领域：适用输送冶金、矿山、煤炭、电力等行业的中、低扬程工矿应用，如矿山、冶金、电力、钢厂、化工行业浆体输送。

Feature of Product: Double casing construction It has a character of high efficiency, wear-resistant, stable performance and excellent interchangeability. The material of liner and impeller is adopted of wear-resistant metal or rubber, discharge branch can be positioned at 8 different positions at an interval of 45°, the pumps may be installed in multistage in series, may be driven by belt or direct coupling. The seal of shaft may be adoptable of gland seal, expeller seal or mechanical seal. Pump should rotates colckwise viewing from driving end.

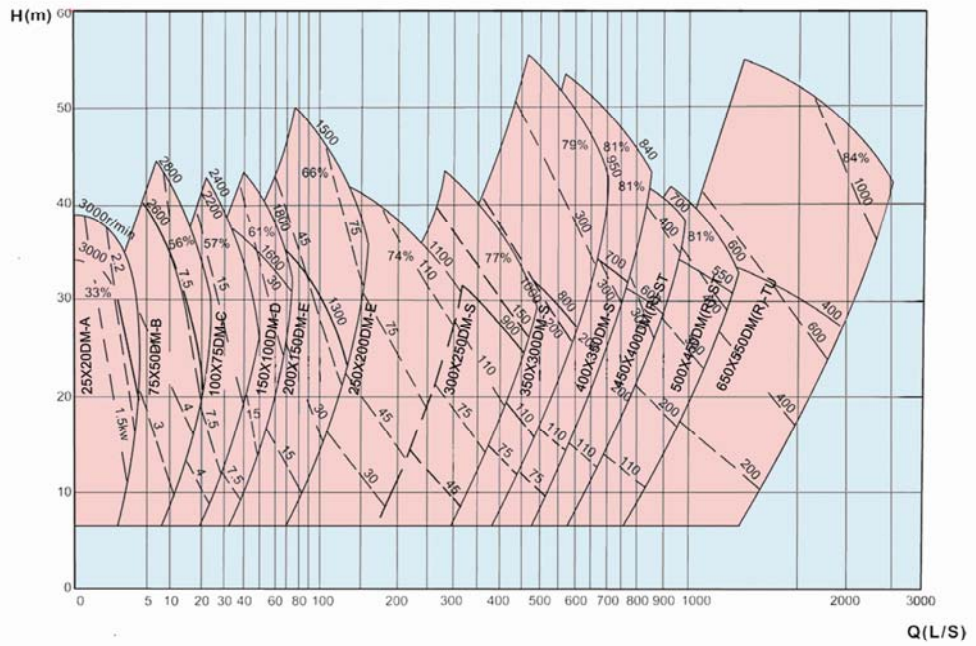
Application: The pumps are suitable for delivering middle, low density slurries in metallurgical, mining, coal and power industries, etc, for example slurry delivering in mining, metallurgical, power plant, steel mill and chemical industries, etc.

DM(R)系列渣浆泵外形及安装尺寸图 Outline and Installation Dimension of Type DM(R) Slurry Pump



14

DM(R)系列渣浆泵型谱图 Selection Chart of Type DM(R) Slurry Pump



12

DM(R)系列渣浆泵性能参数 Performance Parameter of Type DM(R) Slurry Pump

型号 Type	允许配代 最大功率 Allowable Mating Max. Power (kW)	材质 Material		性能参数 Clear Water Performance						叶轮 Impeller	
		护套 Liner	叶轮 Impeller	流量 Capacity (Q)		扬程 Head (H) (m)	转速 Speed (n) (r/min)	最高效率 Max.Eff. (%)	汽蚀余量 NPSHr (m)	叶片数 No. of Vanes	叶轮直径 Impeller Dia. (mm)
				(m ³ /h)	(l/s)						
25X20DM-A	7.5	M	M	2.34~10.8	0.65~3	6~37	1400~3000	30	—	4	152.4
75X50DM-B	15	M	M	16.2~76	4.5~20	9~44	1400~2800	55	—	4	190
100X75DM-C	30	M	M	18~151	5~42	4~45	900~2400	57	—	4	229
150X100DM-D	60	M	M	50~252	14~70	7~46	800~1800	60	2~3.5	4	305
200X150DM-E	120	M	M	115~486	32~135	12~51.5	800~1500	65	2~6	4	381
250X200DM-E	120	M	M	234~910	65~253	9.5~40	600~1100	64	3~6	4	457
300X250DM-S	120	M	M	396~1425	110~396	8~30	500~800	77	2~10	5	550
350X300DM-S	560	M	M	468~2538	130~705	8~60	400~950	79	2~10	5	653
400X350DM-S	560	M	M	650~2800	180~780	10~59	400~840	81	3~10	5	736
450X400DM(R)-ST	560	M	M	720~3312	200~920	7~51	300~700	80	2~10	5	825
		M	M	756~3312	210~920	7~37.5	6300~600	85	2~8		
500X450DM(R)-ST	560	M	M	1008~4356	280~1210	9~48	300~600	80	2~9	5	933
		RU	RU	1080~4356	300~1210	9~40	300~550	87	3~10		
650X550DM(R)-TU	1200	M	M	1980~7920	560~2200	10~50	250~475	86	4~10	5	1213
		RU	RU	1980~7920	700~2530	10~50	250~475	86	4~10		
注:	1. "M"代表合金耐磨材料, "RU"代表橡胶材料。 2. 推荐流量范围50%Q' ≤ Q ≤ 110%Q' (Q' ≈ 相应于最高效率点流量)。										
Note:	1. "M": alloy wear-resistant material, "RU": rubber. 2. Capacity range recommend: 50% Q' ≤ Q ≤ 110% Q' (Q' = appropriate to capacity at highest efficiency point).										

DM(R)系列渣浆泵外形及安尺寸 Outline and Installation Dimension of Type DM(R) Slurry Pump

型号 Type	外形尺寸 Outline Dimension(mm)													
	A	B	C	D	E	F	G	n-d	H	J	K	L	M	N
25X20DM-A	461	159	241	286	25	210	28	4-φ18	57	20	145	89	90	86
75X50DM-B	642	143	254	295	24	248	38	4-φ14	80	28	197	191	136	114
100X75DM-C	813	175	356	406	32	311	48	4-φ19	120	42	254	253	163	146
150X100DM-D	950	213	432	492	38	364	64	4-φ22	163	65	330	280	187	190
200X150DM-E	1218	257	546	622	54	448	76	4-φ29	220	80	457	376	237	248
250X200DM-E	1334	257	546	622	54	448	76	4-φ29	220	80	457	413	306	292
300X250DM-E	1406	490	560	680	50	590	70	4-φ28	216	85	350	322	324	438
350X300DM-S	1720	640	760	920	70	780	90	4-φ35	280	120	450	415	300	475
400X350DM-S	1776	640	760	920	70	780	90	4-φ35	280	120	650	425	340	530
450X400DM(R)-ST	1840	620	900	1150	80	780	125	4-φ48	280	120	650	480	375	600
500X450DM(R)-ST	1875	620	900	1150	80	780	125	4-φ48	280	120	650	500	400	660
650X550DM(R)-TU	2400	860	1200	1460	95	1050	150	4-φ79	350	150	900	625	500	860

型号 Type	泵头尺寸 Pump Head Dimension(mm)				进口法兰尺寸 Intake Flange Dimension(mm)				出口法兰尺寸 Discharge Flange Dimension(mm)			
	S	Q	R	P	O.D.	I.D.	C-C BET. Holes	Holes	O.D.	I.D.	C-C BET. Holes	Holes
25X20DM-A	144	—	—	128	114	25	83	4-φ14	102	20	73	4-φ14
75X50DM-B	—	155	—	163	184	75	146	4-φ19	165	50	127	4-φ19
100X75DM-C	102	—	—	204	229	100	191	4-φ19	203	75	165	4-φ19
150X100DM-D	118	—	—	262	305	150	260	4-φ22	229	100	191	4-φ22
200X150DM-E	155	—	—	324	368	200	324	4-φ19	305	150	260	4-φ19
250X200DM-E	199	—	—	401	445	250	394	8-φ22	382	200	337	8-φ22
300X250DM-E	257	476	603	470	552	305	495	8-φ32	483	254	425	8-φ32
350X300DM-S	165	599	634	570	560	350	500	12-φ26	530	300	470	12-φ26
400X350DM-S	295	643	691	620	640	400	580	12-φ26	590	350	530	12-φ26
450X400DM(R)-ST	343	747	809	740	720	450	650	12-φ33	685	400	615	12-φ33
500X450DM(R)-ST	375	814	872	800	770	500	700	12-φ33	740	450	670	12-φ33
650X550DM(R)-TU	453	1055	1142	975	975	650	880	12-φ39	900	350	800	12-φ39